

CASTING ON SHETLAND

woolweek

24 SEP - 2 OCT 2022



FREE KNITTING
PATTERN

www.shetlandwoolweek.com



/shetlandwoolweek



/shetlandwoolweek

BONNIE ISLE HAT

By Linda Shearer

I live on the island of Whalsay, whose nickname, the 'Bonnie Isle', became the name for my hat.

Living on an island means the sea is ever present in our lives. All the men in my family have worked on or near the sea. But although the 'Bonnie Isle' hat has a nautical theme, the patterns mean much more. The chain in the rib represents the link between us all during Shetland Wool Week; and the anchor, a common motif in Fair Isle knitting, symbolises a sense of keeping grounded, connected to what matters most, and able to cope with life's challenges. The crown, a circle, is to me a spinning wheel and a tribute to my mother Ina Irvine. A prolific spinner and knitter, she was my inspiration.

I hope you like the hat and enjoy knitting it.

Materials

Colourway 1



Jamieson's of Shetland

Spindrift (2ply equivalent to a 4ply/fingering weight);
100% Real Shetland wool; 105m/25g ball

Yarn A: Granite (122); 2 balls

Yarn B: Stonewash (677); 1 ball

Yarn C: Dove (630); 1 ball

Yarn D: Oxford (123); 1 ball

Yarn E: Natural White (104); 1 ball

www.jamiesonsofshetland.co.uk

Colourway 2



Jamieson & Smith

2ply Jumper Weight (2ply equivalent to a 4ply/fingering weight); 100% Real Shetland wool;
115m/25g ball

Yarn A: Shade FC41; 2 balls

Yarn B: Shade 091; 1 ball

Yarn C: Shade 1281 mix; 1 ball

Yarn D: Shade 096; 1 ball

Yarn E: Shade 9113; 1 ball

www.shetlandwoolbrokers.co.uk

Colourway 3



Uradale Yarns

2ply Jumper Weight (2ply equivalent to a 4ply/ fingering weight); 100% Organic Shetland wool; 86m/25g ball (50g balls are also available)

Yarn A: Aetmeal; 2 balls

Yarn B: Roanberry Meal; 1 ball

Yarn C: Roanberry Heath; 1 ball

Yarn D: Graeff; 1 ball

Yarn E: Flukkra; 1 ball

www.uradale.com

Colourway 5



Aister Oo

2ply Jumper Weight (2ply equivalent to a 4ply/ fingering weight); 100% Shetland wool; 71m/25g ball (50g balls are also available)

Yarn A: Moonshine; 2 balls

Yarn B: Cluve; 1 ball

Yarn C: Holsas; 1 ball

Yarn D: Midsetter; 1 ball

Yarn E: Blinnd Moorie; 1 ball

www.mackenziesfarmshop.co.uk

Colourway 4



Laxdale Yarn

2ply Jumper Weight (2ply equivalent to a 4ply/ fingering weight); 100% Shetland wool; 90m/25g ball

Yarn A: Fern; 2 balls

Yarn B: Lichen; 1 ball

Yarn C: Buttermilk; 1 ball

Yarn D: Winter Sky; 1 ball

Yarn E: Artichoke; 1 ball

www.laxdaleyarn.com

> Set of DPNs or circular needle long enough to work magic loop, or your preferred needles for working small circumferences in the round, in the correct size to achieve your desired tension

> Set of DPNs or circular needles 0.25mm smaller than your tension needles, for ribbing

> Stitch marker

> Tapestry needle

Tension and Size

Please check your tension carefully and adjust your needle size accordingly.

It is important that you swatch, wash it, and measure your tension after it is dried.

Small:

32 sts and 36 rounds to 10cm over colourwork pattern in the round, after blocking.

To fit: 51cm

Finished circumference: 49cm

Length: 21cm from crown to brim

Suggested needle size: 2.75mm

Medium:

30 sts and 34 rounds to 10cm over colourwork pattern in the round, after blocking.

To fit: 54cm

Finished circumference: 52cm

Length: 22cm from crown to brim

Suggested needle size: 3.00mm

Large:

28 sts and 32 rounds to 10cm over colourwork pattern in the round, after blocking.

To fit: 58cm

Finished circumference: 56cm

Length: 23.5cm from crown to brim

Suggested needle size: 3.25mm

Abbreviations

dec	decrease(d)
inc	increase(d)
k	knit
kfb	knit into the front and back of the st (1 st inc)
k2tog	knit 2 sts together as if they were one st (1 st dec)
p	purl
sk2p	slip 1 st as if to knit, k2tog, pass slipped st over (2 sts dec)
st(s)	stitch(es)

Techniques

Knitting in the round, increasing, decreasing, stranded colourwork.

Pattern Notes

Bonnie Isle Hat is worked in the round from the brim to the crown.

Chart Notes

Read all rows from right to left.

Instructions

Brim

Using yarn A and smaller needles, cast on 140 sts.

Row 1 (RS): [K1, p1] to end (shown as row 1 of chart A). Do not turn.

Place marker and join to work in the round, being careful not to twist your work.

Begin working from row 2 of chart A, working the 10 st repeat a total of 14 times across the round.

Continue working from chart A as set, changing colours where indicated, until all 14 rows are complete.

Continue in yarn A.

Inc round: K9, kfb, [k7, kfb] to last 10 sts, k to end.
156 sts

Body

Change to larger needles.

Begin working from row 1 of chart B, working the 12 st repeat 13 times in total across the round.

Continue working from chart B as set, changing colours where indicated, until all 14 rows of chart are complete.

Begin working from row 1 of chart C, working the 13 st repeat 12 times in total across the round.

Continue working from chart C as set, changing colours where indicated, until all 13 rows of chart are complete.

Begin working from row 1 of chart D, working the 12 st repeat 13 times in total across the round.

Continue working from chart D as set, changing colours where indicated, until all 14 rows of chart are complete.

Continue in yarn A.

Dec round: [K4, k2tog, k3, k2tog] to last 2 sts, k2.
128 sts

Crown

Begin working from row 1 of chart E, working the 16 st repeat 8 times in total across the round.

Continue working from chart E as set, changing colours and decreasing where indicated, until all 19 rows of chart E are complete. 8 sts

Break yarn and pull through remaining stitches twice to close crown, and fasten off securely.

Finishing

Tighten any knots and weave in ends on the inside of the hat. Using a strong yarn, thread it through the very edge stitches of the hat, leaving a longish tail. Handwash hat in lukewarm water. Squeeze out the excess water (do not wring), then wrap in a towel and press to remove as much water as possible. Stretch hat over a bowl or ball, pulling in the thread round the edge of the hat a little and tying it, which helps to make the brim lie flat and a bit more snug. Leave until completely dry.

Optional pompom

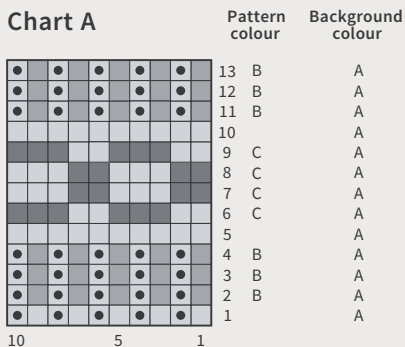
Use leftover yarn to make a pompom.



BONNIE ISLE HAT

By Linda Shearer

Chart A



Key








-  knit
-  purl
-  Yarn A
-  Yarn B
-  Yarn C
-  Yarn D
-  Yarn E

Chart B

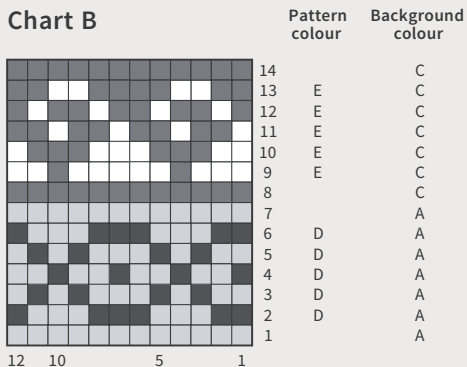
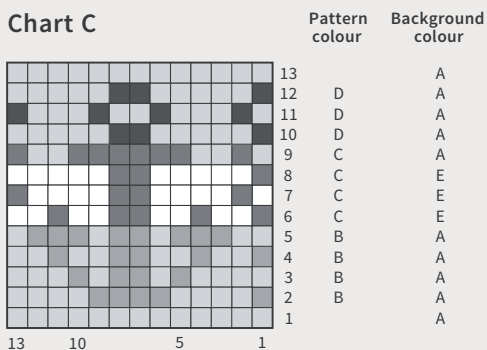


Chart C



Key









-  knit
-  k2tog
-  sk2p
-  Yarn A
-  Yarn B
-  Yarn C
-  Yarn D
-  Yarn E

Chart D

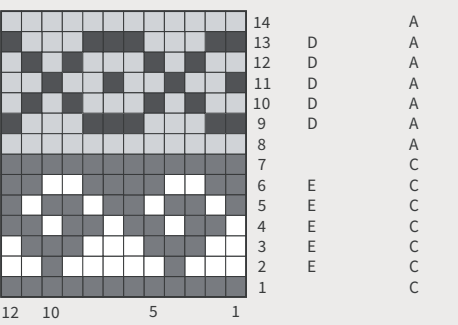
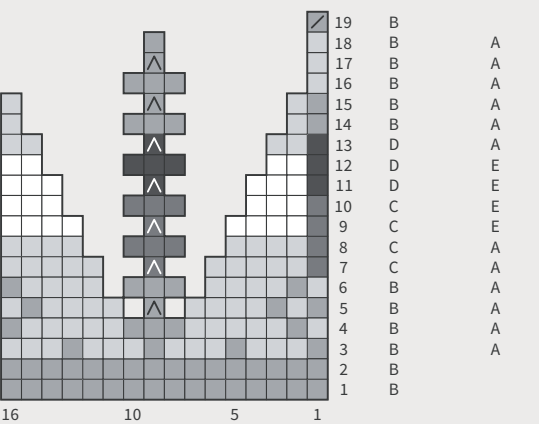


Chart E



CASTING ON SHETLAND woolweek

24 SEP - 2 OCT 2022

We are thrilled that Shetland Wool Week will be going ahead in person this year.

For the past two years we have run a virtual event, but this year, with Covid restrictions lifting around the world, we wanted to take our first steps towards bringing a physical event back and will be calling it 'Casting on Shetland Wool Week'.

Whilst it will be a scaled back version of our usual physical event, we hope to deliver a varied programme, sharing talks, classes and events, all with Shetland wool at the core.

We look forward to seeing you!



Follow us on Instagram

Remember to share your creations and experiences with us by tagging your photos with

#BonnielsleHat #ShetlandWoolWeek2022

Photographer: Odd Poppy Photography Technical editor: Steph Boardman

www.shetlandwoolweek.com

/shetlandwoolweek

/shetlandwoolweek